

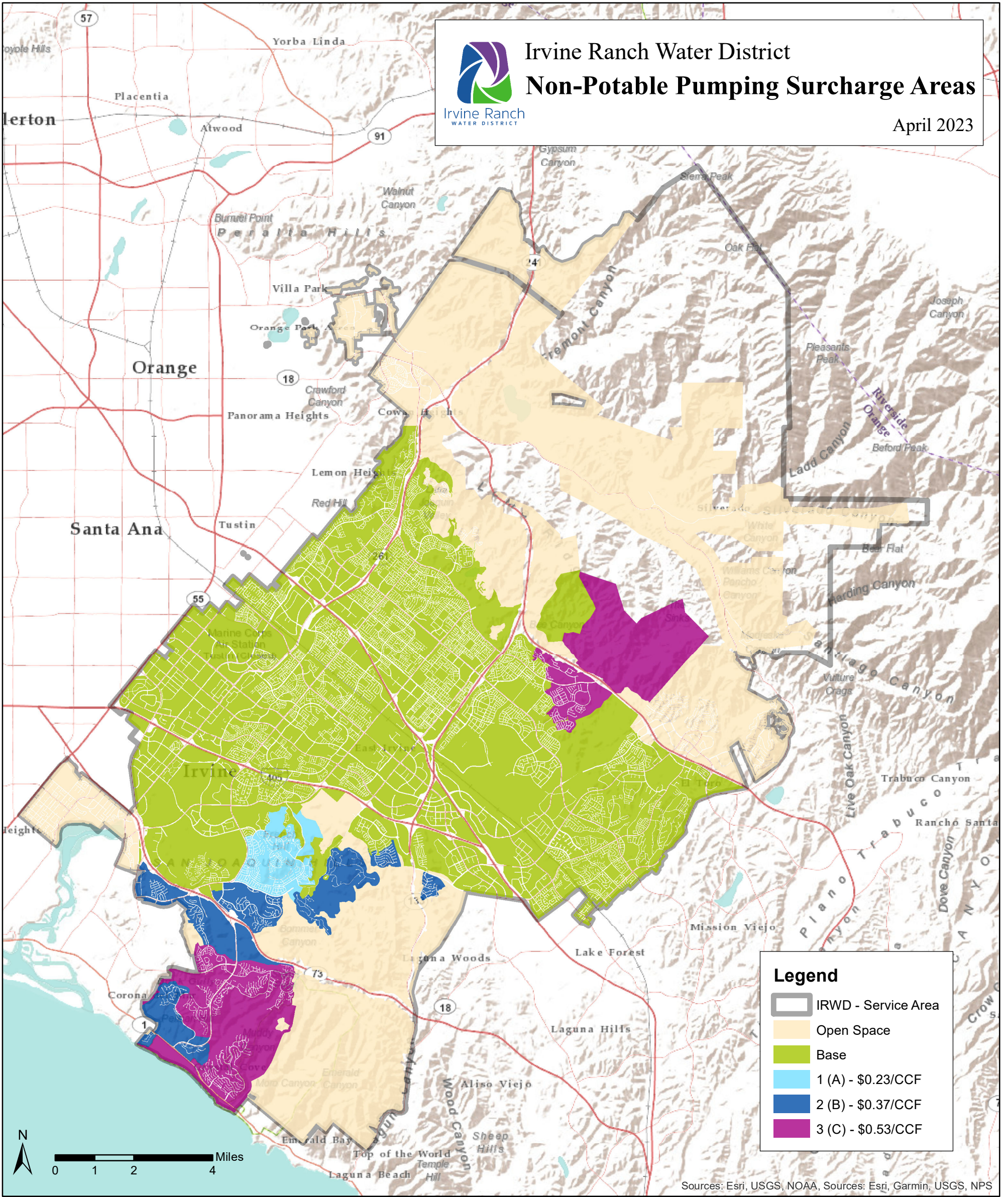


Irvine Ranch Water District

Non-Potable Pumping Surcharge Areas

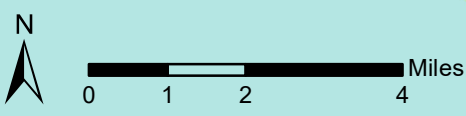
Irvine Ranch
WATER DISTRICT

April 2023



Legend

- IRWD - Service Area
- Open Space
- Base
- 1 (A) - \$0.23/CCF
- 2 (B) - \$0.37/CCF
- 3 (C) - \$0.53/CCF



Sources: Esri, USGS, NOAA, Sources: Esri, Garmin, USGS, NPS

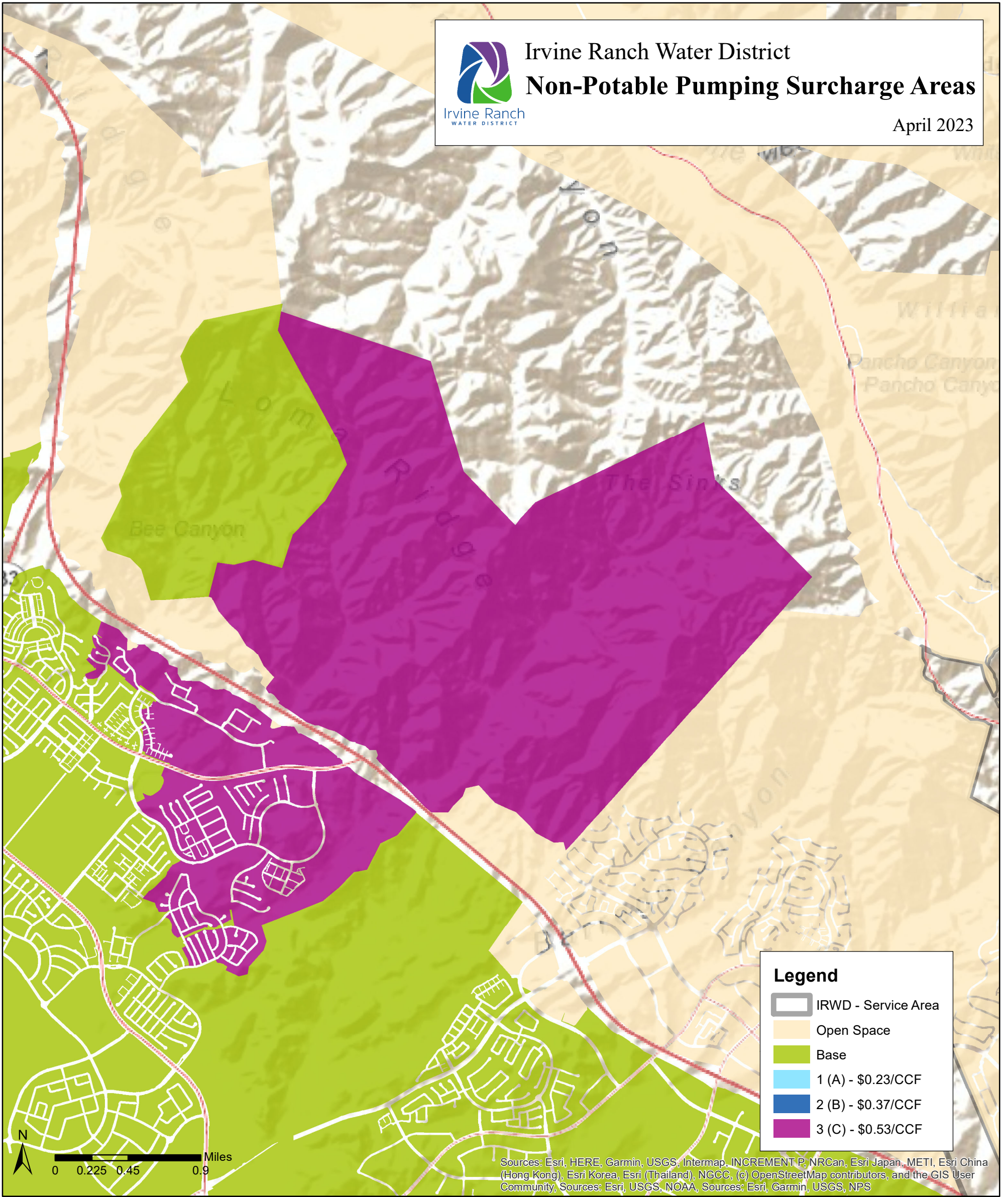


Irvine Ranch Water District

Non-Potable Pumping Surcharge Areas

Irvine Ranch
WATER DISTRICT

April 2023



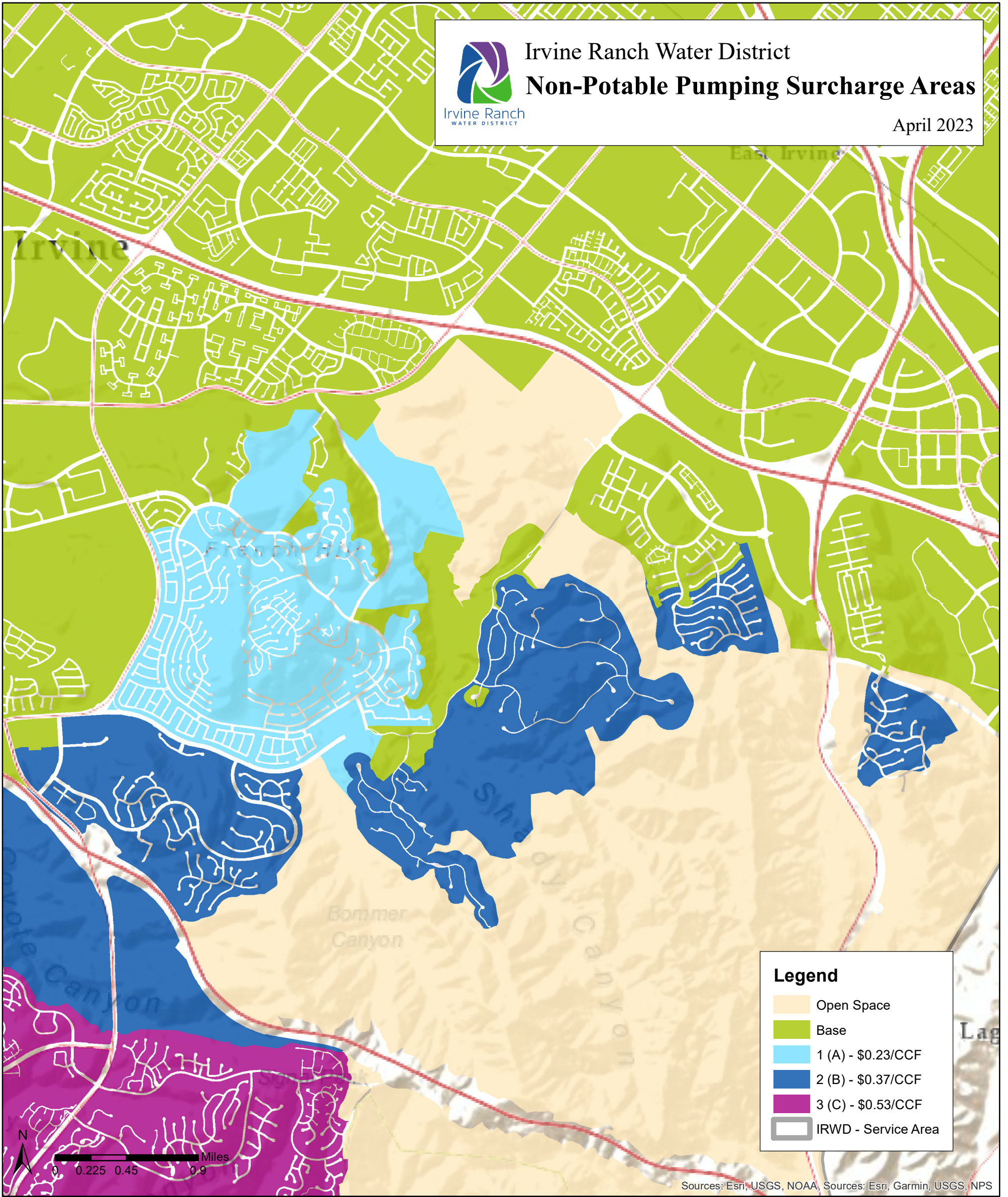


Irvine Ranch Water District

Non-Potable Pumping Surcharge Areas

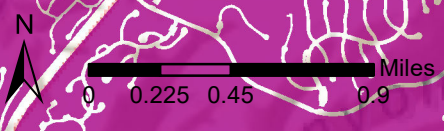
Irvine Ranch
WATER DISTRICT

April 2023



Legend

- Open Space
- Base
- 1 (A) - \$0.23/CCF
- 2 (B) - \$0.37/CCF
- 3 (C) - \$0.53/CCF
- IRWD - Service Area



Sources: Esri, USGS, NOAA, Sources: Esri, Garmin, USGS, NPS

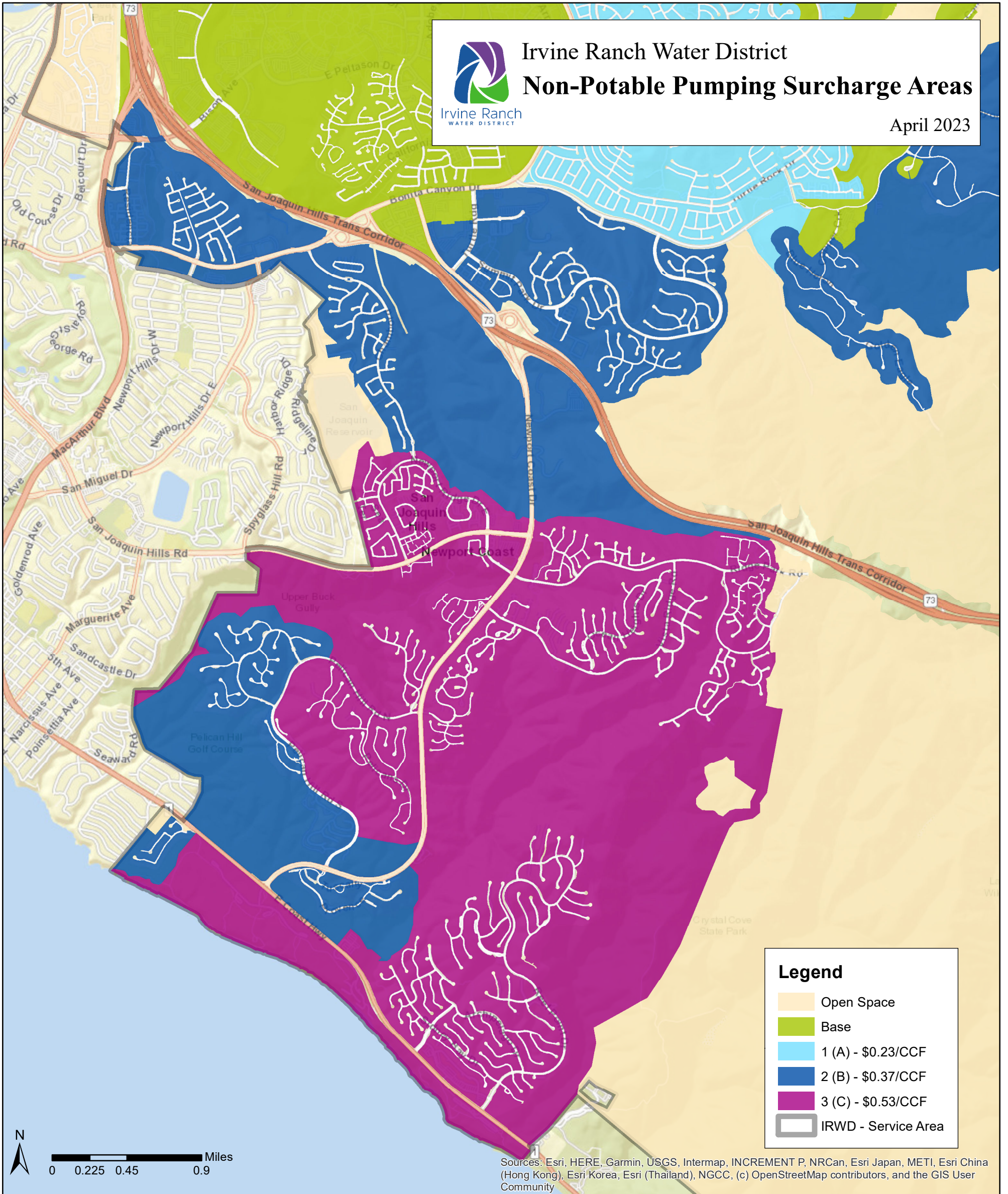


Irvine Ranch Water District

Non-Potable Pumping Surcharge Areas

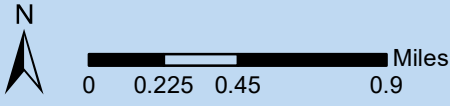
Irvine Ranch
WATER DISTRICT

April 2023



Legend

- Open Space
- Base
- 1 (A) - \$0.23/CCF
- 2 (B) - \$0.37/CCF
- 3 (C) - \$0.53/CCF
- IRWD - Service Area



Sources: Esri, HERE, Garmin, USGS, Intermap, INCREMENT P, NRCan, Esri Japan, METI, Esri China (Hong Kong), Esri Korea, Esri (Thailand), NGCC, (c) OpenStreetMap contributors, and the GIS User Community