

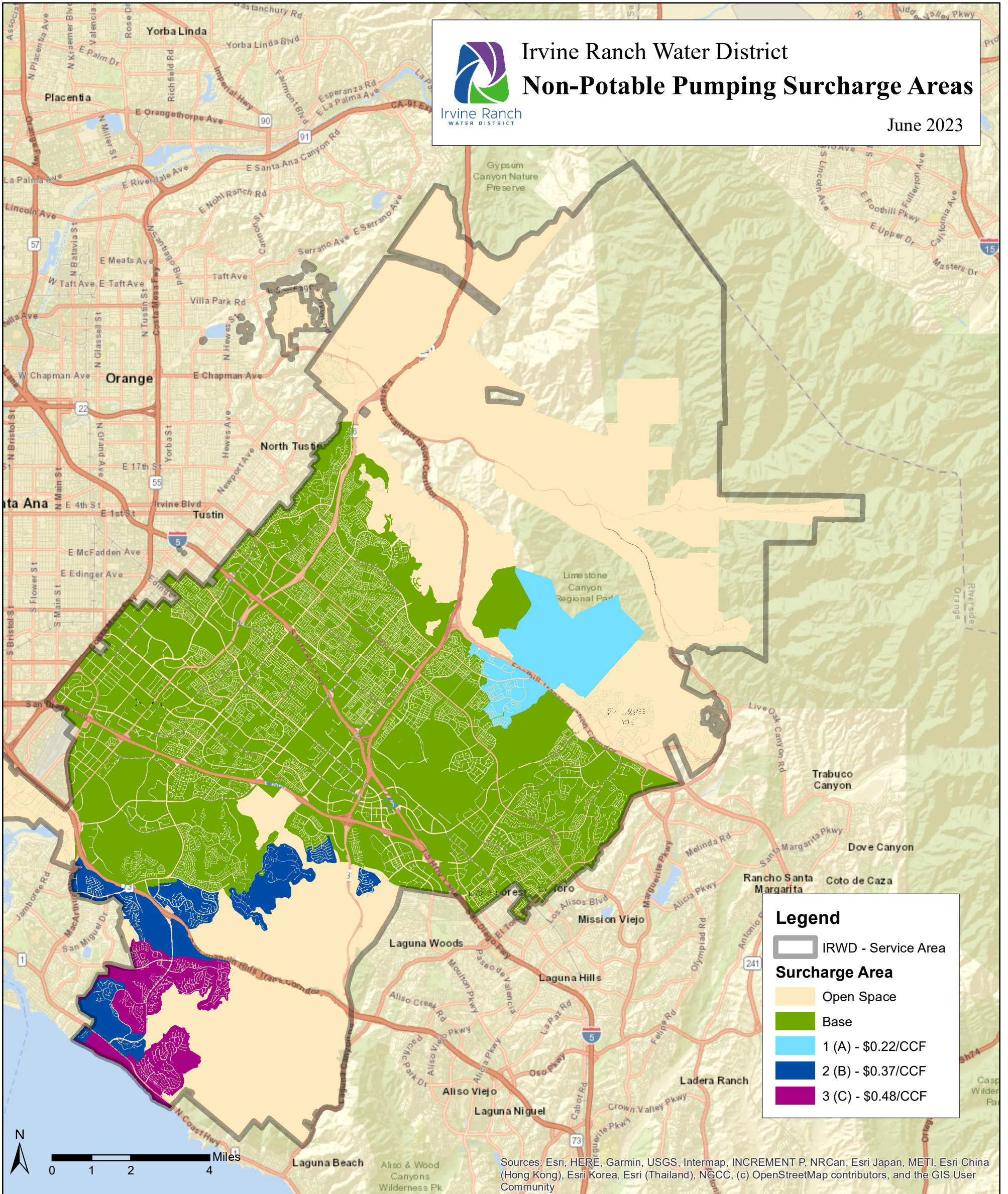


Irvine Ranch Water District

# Non-Potable Pumping Surcharge Areas

Irvine Ranch  
WATER DISTRICT

June 2023

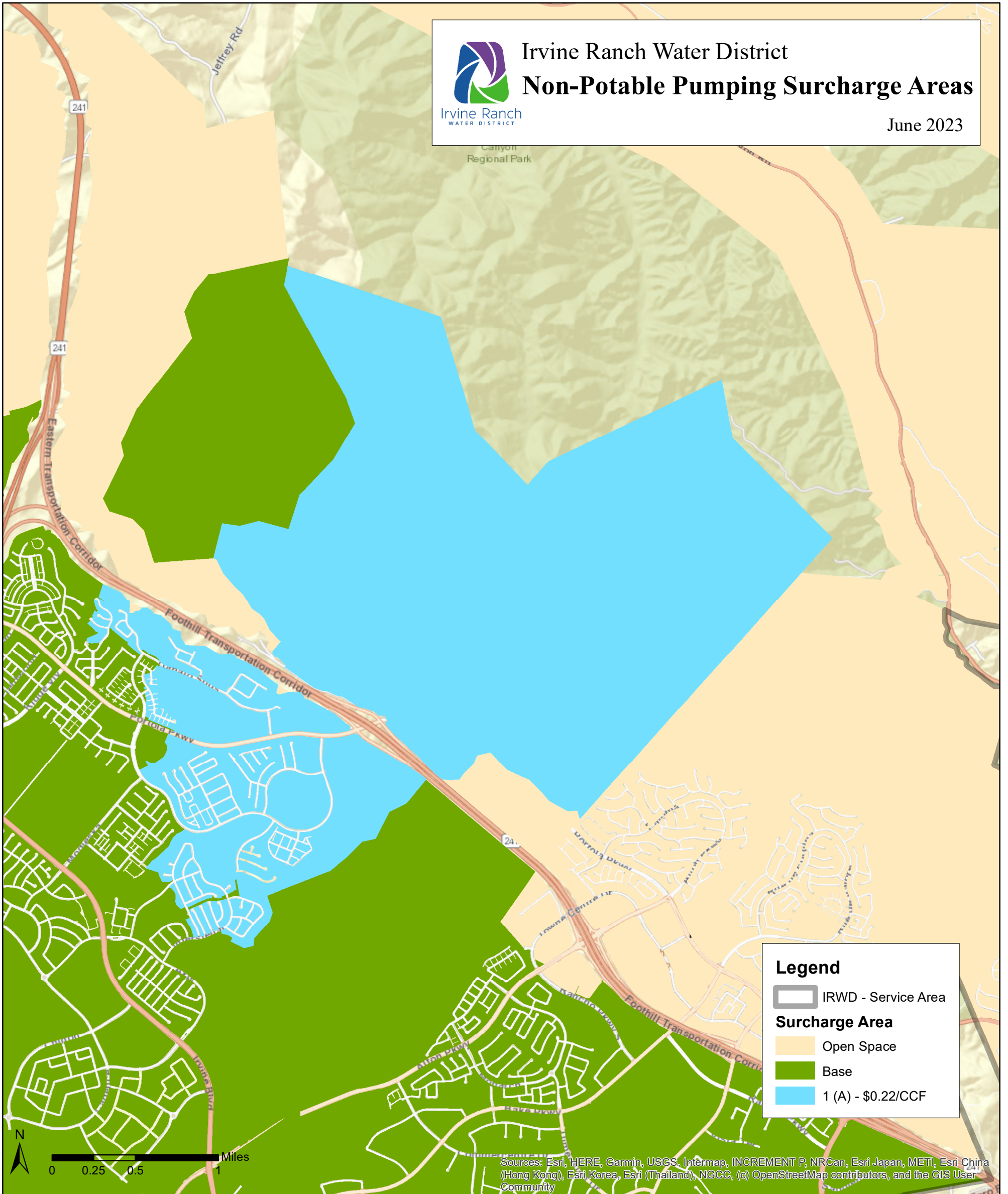




Irvine Ranch Water District

# Non-Potable Pumping Surcharge Areas

June 2023



**Legend**

- IRWD - Service Area
- Surcharge Area**
  - Open Space
  - Base
  - 1 (A) - \$0.22/CCF

Sources: Esri, HERE, Garmin, USGS, Intermap, INCREMENT P, NRCan, Esri Japan, METI, Esri China (Hong Kong), Esri Korea, Esri (Thailand), NGCC, (c) OpenStreetMap contributors, and the GIS User Community

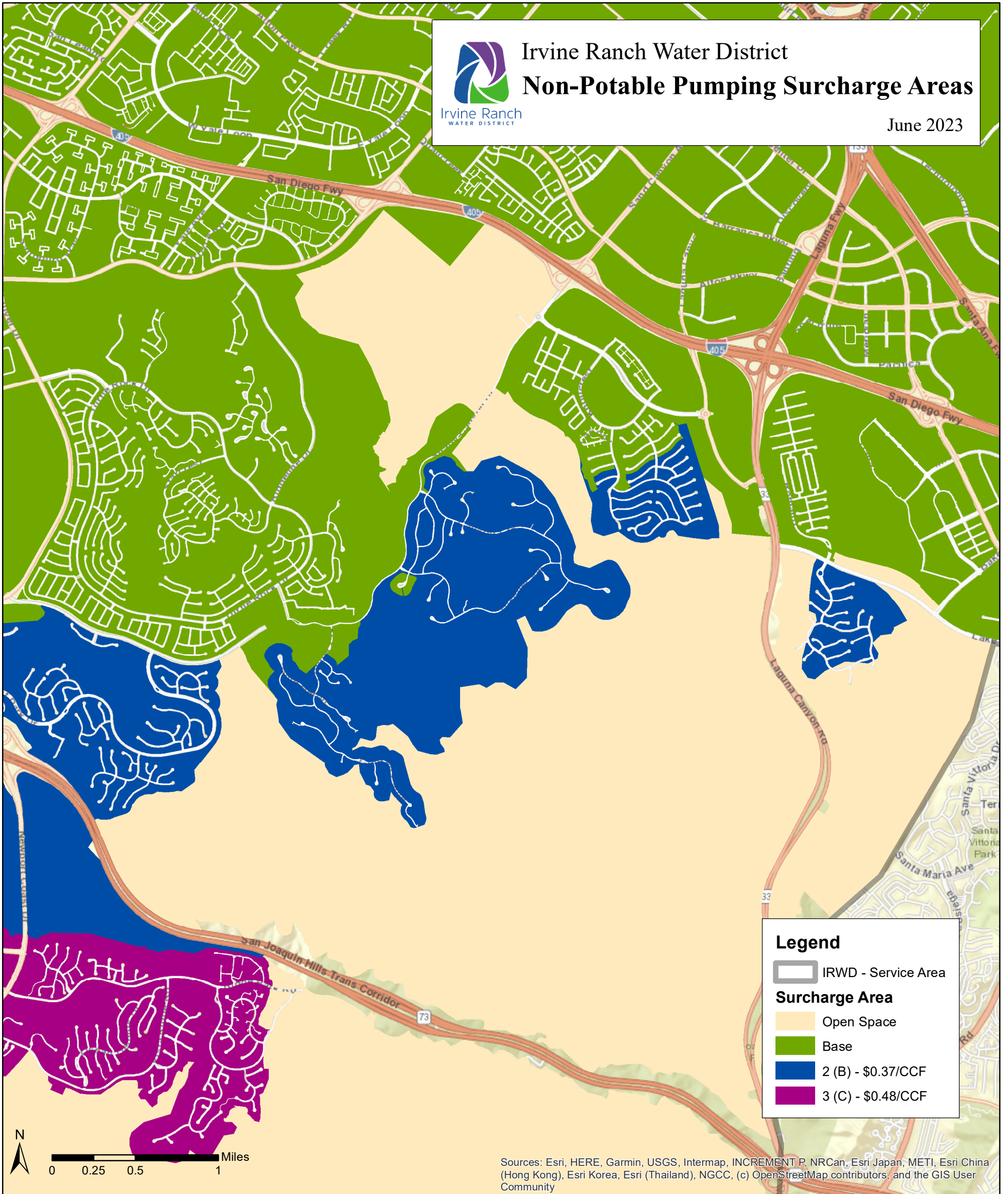


Irvine Ranch Water District

# Non-Potable Pumping Surcharge Areas

Irvine Ranch  
WATER DISTRICT

June 2023



Sources: Esri, HERE, Garmin, USGS, Intermap, INCREMENT P, NRCan, Esri Japan, METI, Esri China (Hong Kong), Esri Korea, Esri (Thailand), NGCC, (c) OpenStreetMap contributors, and the GIS User Community

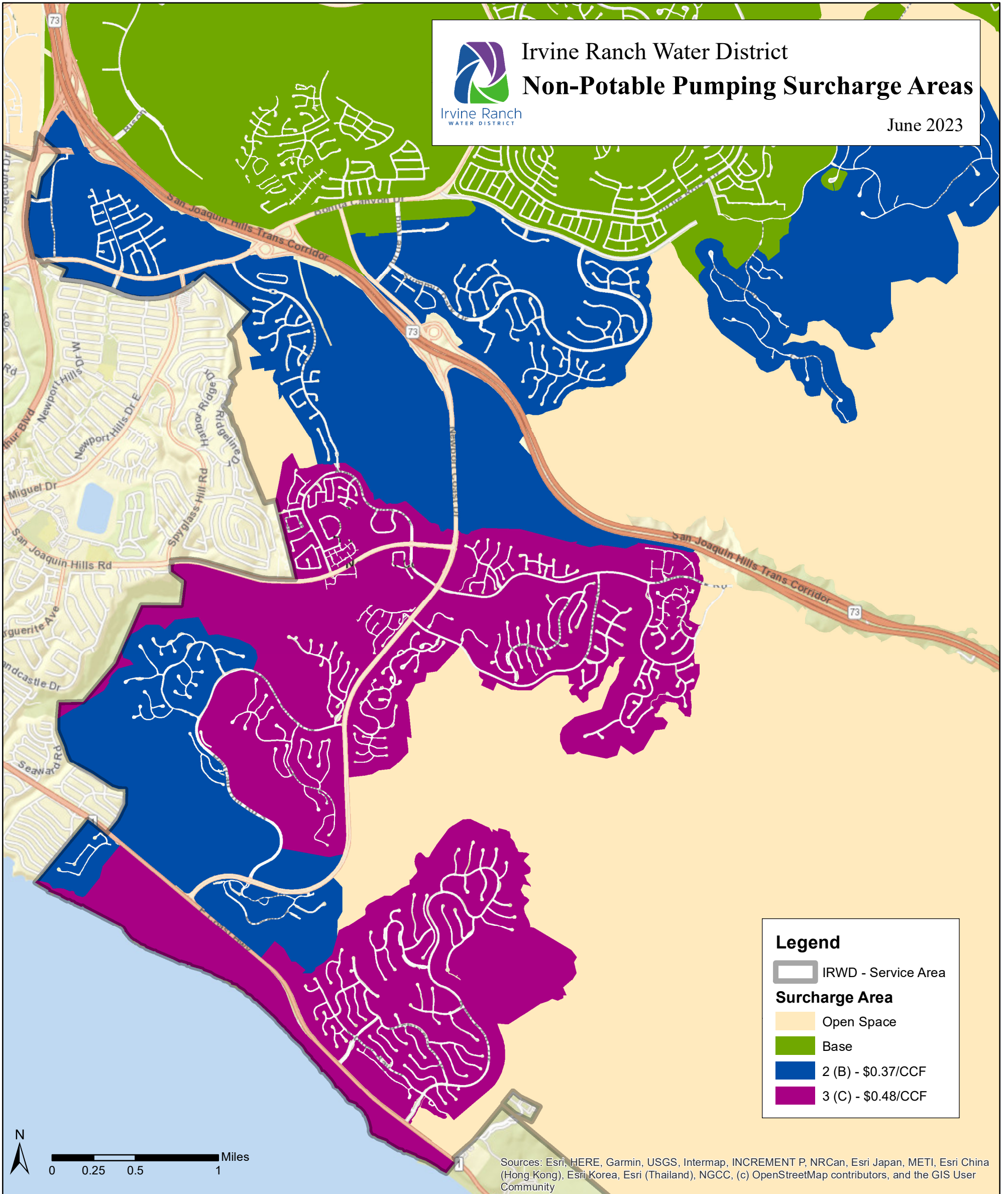


Irvine Ranch Water District

# Non-Potable Pumping Surcharge Areas

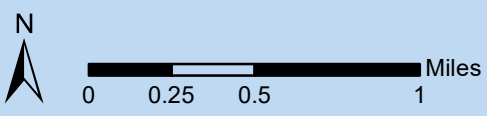
Irvine Ranch  
WATER DISTRICT

June 2023



**Legend**

- IRWD - Service Area
- Surcharge Area**
- Open Space
- Base
- 2 (B) - \$0.37/CCF
- 3 (C) - \$0.48/CCF



Sources: Esri, HERE, Garmin, USGS, Intermap, INCREMENT P, NRCan, Esri Japan, METI, Esri China (Hong Kong), Esri Korea, Esri (Thailand), NGCC, (c) OpenStreetMap contributors, and the GIS User Community