

Kern Fan Groundwater Storage Project

Briefing to the Bureau of Reclamation

June 26, 2020



Irvine Ranch
WATER DISTRICT



Agenda

- Introductions
- Project Overview
 - Location
 - Facilities and capacities
 - Water Sources
 - Project benefits
 - Joint Implementation
 - Project Schedule
- WIIN Act Funding
 - Feasibility Report and Federal Funding Request
 - Status of Bureau of Reclamation Review
 - WIIN Act Funding Checklist





Introduction to IRWD and Rosedale

- Irvine Ranch Water District (IRWD)
 - Established in 1961
 - Provides potable and recycled water, sewage collection & treatment to customers over 181 square miles in Orange County
- Rosedale-Rio Bravo Water Storage District (Rosedale)
 - Established in 1959
 - Provides water replenishment to over 27,500 acres of irrigated agricultural lands
- Jointly developed other water banking projects



Irvine Ranch
WATER DISTRICT

Project Overview

Kern Fan Groundwater Storage Project

Kern Fan Groundwater Storage Project

- A groundwater storage project in Kern County that will:
 - Store water otherwise lost to ocean
 - Provide water supply and ecosystem benefits
 - Improve the climate resiliency of the State's water system
- Joint implementation by IRWD and Rosedale
- Estimated Project Cost:
 - Contract cost: \$129 million
 - Total cost \$225 million (under review)
- State grant funding award of \$68M
- Working to secure WIIN Act funding



Project Location

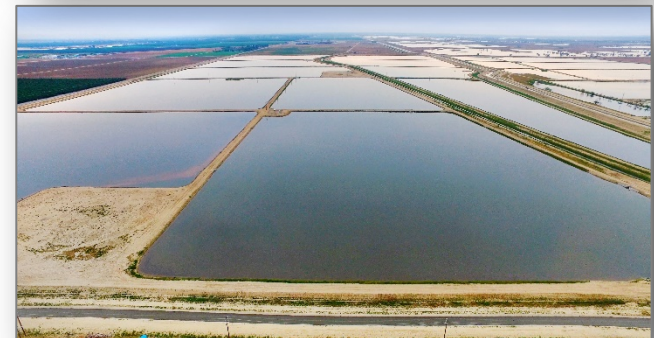


Kern County Sub-basin

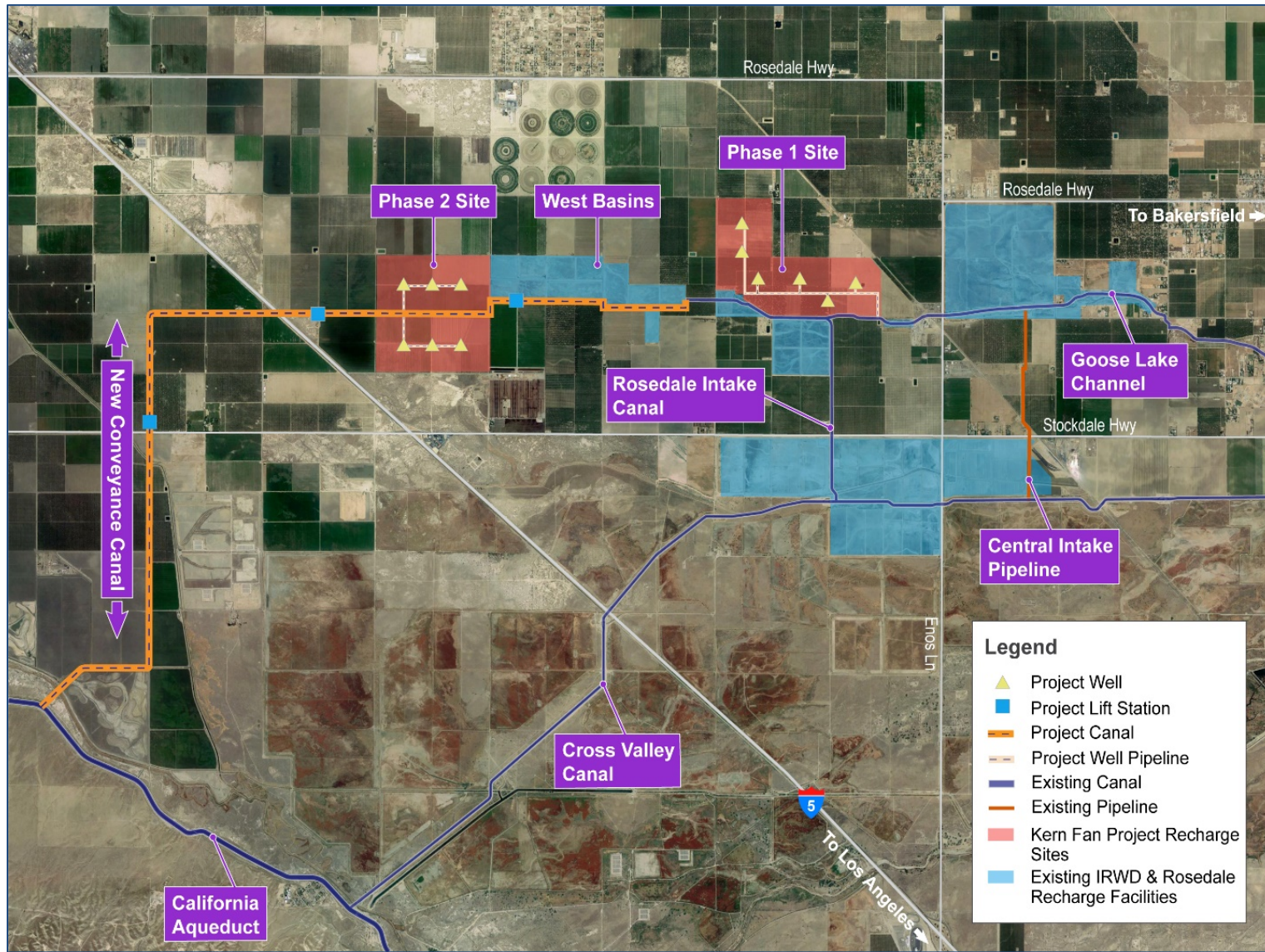


Project Facilities and Capacities

- New Conveyance from California Aqueduct
 - New turnout
 - 10-mile canal
 - 500 cfs capacity
 - 3 lift stations
- 1,050 Acres of Recharge Basins
 - Annual recharge capacity of 100,000 AF
 - 100,000 AF storage capacity
- 12 Recovery Wells
 - Combined capacity up to 70 cfs
- Stores water otherwise lost to the ocean
 - Article 21 water and other available water
- Improves flexibility in operation of State's water system



Preliminary Project Facilities Map



Sources of Water for the Kern Fan Project

- Project will store water otherwise lost to the ocean
 - State Water Project Article 21 water, and
 - Other available sources including high flow Kern River water
- Recharge up to 70,000 acre-feet during wet years
- No impacts to State Water Project or Central Valley Project
- No changes to water rights or contracts



Project Benefits

- Water supply for M&I and Agriculture
- Supplemental water supply in the event of extended critical droughts and Delta levee failures
- Improves habitat for Delta fish species (Chinook salmon, steelhead trout)
- Provides intermittent wetland habitat during recharge periods
- Improves groundwater levels in Kern County basin
- Positive economic impacts to agriculture in Kern County by preserving permanent crops





Joint Implementation

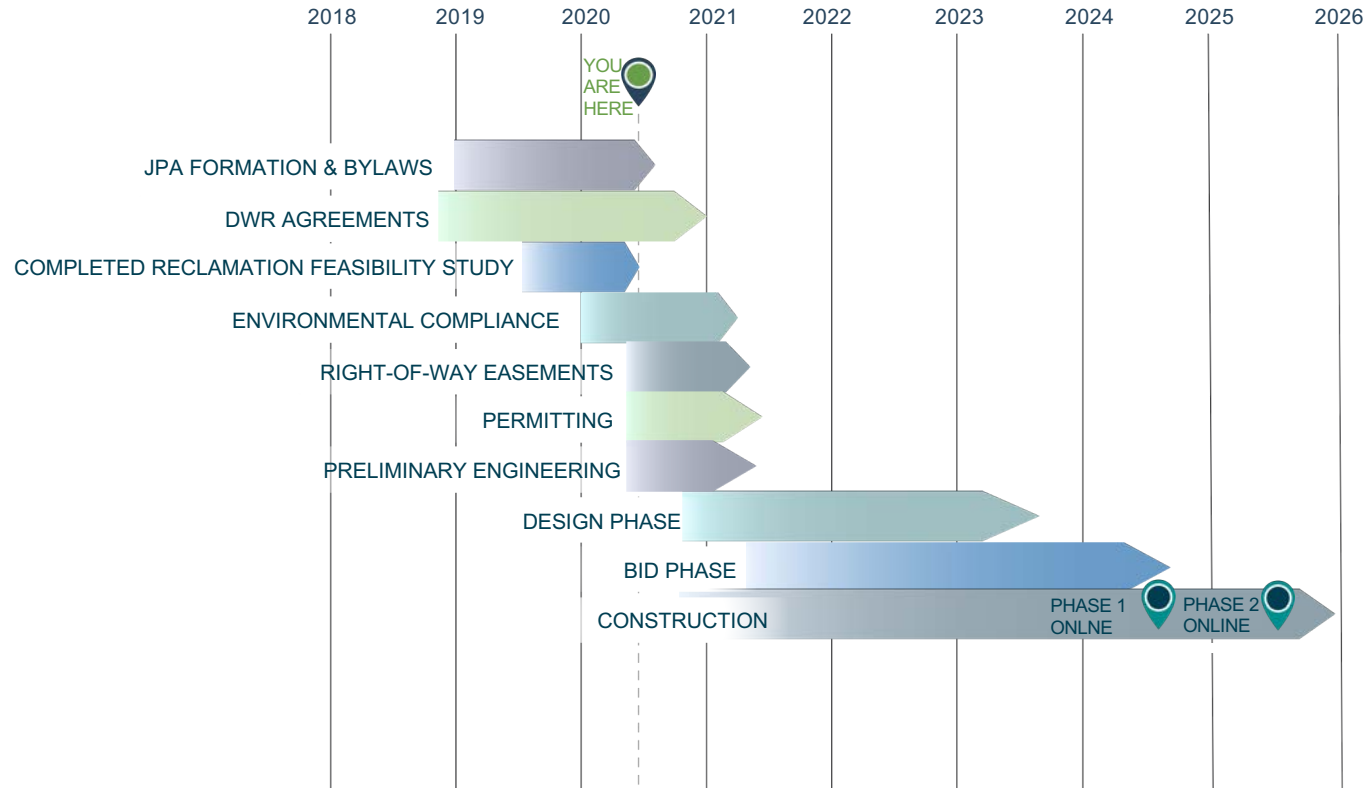
The Groundwater Banking Joint Powers Authority being formed by IRWD and Rosedale to facilitate:

- Land acquisition
- Environmental review
- Permitting
- Design
- Construction
- Operations



Irvine Ranch
WATER DISTRICT

Project Schedule





WIIN Act Funding

Feasibility Report and Federal Funding Request

- Initial Feasibility Report submitted to Reclamation in October 2019
- Additional information and 30% Design Report submitted to Reclamation on April 13, 2020
- Federal funding request revised from \$50.2 to \$60.6 million





Reclamation Policy Review Complete

- Reclamation has determined the Project meets the requirements of the WIIN Act Section 4007 and is eligible to be considered for funding pending:
 - Completion of a Design, Estimating and Construction (DEC) Review (project technical feasibility);
 - Completion of National Environmental Policy Act (NEPA) compliance; and
 - Secretarial concurrence of technical and financial feasibility prior to January 2021



Status of Reclamation DEC Review

- Reclamation's DEC team briefing and virtual site visit held June 2, 2020
- DEC Review held week of June 8
- Review findings:
 - Need for Arsenic management plan
 - Include intermittent wetland features in design
 - Revise project cost contingencies
 - Clarity on canal lining costs and earthwork as well as operations and maintenance costs
- Response to DEC findings by July 1
- Joint Resolution Memo recommendation for federal funding



Status of Environmental Review

- Notice of Preparation for the Kern Fan Project Environmental Impact Report (EIR) released April 7, 2020
- Virtual public scoping meeting April 29, 2020
- Rosedale serving as lead agency until Groundwater Banking Authority is formed
- Public review draft EIR anticipated to be released fall 2020
- Certification late 2020
- Basis for NEPA compliance



WIIN Act Section 4007 – State-Led Storage Project Checklist:

- ✓ California Water Commission Consistency Determination
 - Governor’s Letter Requesting Federal Participation
- ✓ Economic Feasibility
- ✓ Engineering Feasibility (DEC Review)

- Environmental Compliance to be completed late 2020
- Secretary of the Interior’s Feasibility Concurrence by Jan. 1, 2021
- Construction scheduled to begin by Dec. 16, 2021



Contact Information

Irvine Ranch Water District:

Paul Cook
General Manager
Office: (949) 453-5590
cook@irwd.com

Paul Weghorst
Executive Director of Water Policy
Office: (949) 453-5632
weghorst@irwd.com

Rosedale-Rio Bravo Water Storage District:

Eric Averett
General Manager
Office: (661) 589-6045
eaverett@rrbwsd.com

Dan Bartel, P.E.
Engineer/Assistant Manager
Office: (661) 589-6045
dbartel@rrbwsd.com