

Biggest turf rebate ever!

Right now, you can get \$5 for every square foot removed. Visit [IRWD.com/turfrebate](https://www.irwd.com/turfrebate) for details!

pipelines

APRIL 2023



Irvine Ranch
Water District

Save the date

Shed Show Road Show

Walk-up event

Saturday, May 6
8 a.m. – noon

Get help with a mail-in rebate to cover the cost of a smart sprinkler controller and chat with IRWD landscape guru Juan Garcia about ways to make your landscape more water-friendly at this event at the Tustin Home Depot at 2782 El Camino Real. Giveaways, discounts, demonstrations and more. For other dates and locations, visit [IRWD.com/roadshow](https://www.irwd.com/roadshow).

Community Tour

In-person tour

Saturday, May 6
10 a.m. – 2 p.m.

Join us for a tour of our Michelson Water Recycling Plant, and learn about the wonders of nature as you stroll along the paths and ponds of our San Joaquin Marsh Wildlife Sanctuary.

Sign-up required:
[IRWD.com/events](https://www.irwd.com/events)

Taking the Shed on the road

Coming soon to your neighborhood!

IRWD landscape guru Juan Garcia has spent years delivering informative, water-saving workshops to customers in person and online. In 2022, he began starring in IRWD's new Shed Show video series to give the District's message a broader appeal.

Now, he's going full circle, coming to your neighborhood with The Shed Show Road Show—bringing along everything you need to know about creating and maintaining a beautiful water-efficient landscape for your home.



JUAN GARCIA

IRWD SENIOR WATER EFFICIENCY SPECIALIST

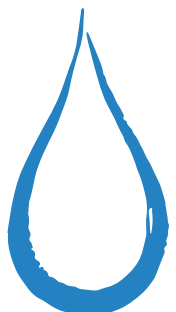
Juan and his shed are making special appearances at community events, nurseries, home improvement stores and other spots in our service area to spread the word about the beauty of a water-friendly yard. He and his friends will offer tips on plants, give demonstrations on irrigation repair and setting your sprinkler timer, provide help on applying for rebates, and more!

Check out [IRWD.com/roadshow](https://www.irwd.com/roadshow) for upcoming locations and offerings, and be sure to take your own Shed Show selfie with Juan when you stop by!

Join the race for water savings

Take a pledge to save water, and help your city win the title as America's most water-wise community. The National Mayor's Challenge is a monthlong competition based on the number of water-saving pledges made by residents on behalf of their cities. Since 2013, the campaign has saved over 7 billion gallons of water. Plus, participants can win prizes!

IRWD is honored to provide water to all of Irvine, and parts of Lake Forest, Newport Beach, Tustin, Costa Mesa, Orange, and unincorporated Orange County. Visit [IRWD.com/savewater](https://www.irwd.com/savewater) for efficiency tips, and take the pledge at mywaterpledge.com.



Below the surface of your water bill

On the surface, your bill is pretty simple: Use more water and the bill goes up. Use less and it goes down. That's because IRWD uses a budget-based rate structure—which provides the water you need and gives you control to save money. But a lot goes into your water bill. Here's a deeper look:

Basic components of your bill

- 1) Water usage charges:** Variable costs – for the amount of water you use.
- 2) Service charges:** Fixed costs – to recover the expenses of maintaining IRWD's water distribution infrastructure, pipes, treatment plants, and sewers.

The variable charges


To encourage wise water use, each residence is assigned a monthly water usage budget. How much you pay for each CCF of water depends on whether you stay within your budget. Rates are broken into four tiers. **Each tier is assigned a rate based on the actual cost of service**, which varies according to the water source. For example, groundwater from local wells

is least expensive, while imported water from out of state or Northern California costs the most. The low volume and base rate tiers reward customers who use water within budget, which reduces the need to import expensive water.

Rate tier	Water budget	Rate per CCF	
Tier 1: Low volume	Up to 40% of your budget	\$1.53	Water use within monthly budget
Tier 2: Base rate	41% to 100% of your budget	\$2.42	
Tier 3: Inefficient	101% to 140% of your budget	\$5.15	Water use over monthly budget
Tier 4: Wasteful	141% and over of your budget	\$14.64	

The fixed charges

In addition to the water usage charges that you control, your bill contains fixed charges for water service and sewer service. Water service charges are based on the size of the meter required to provide flow for the property. These charges—to recover IRWD's fixed infrastructure costs—are assessed whether or not you use water that month.

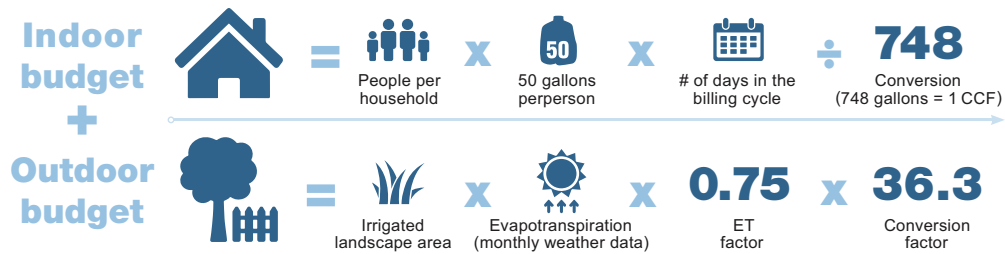


What's a CCF? It's the basic water measurement used on your bill. CCF is short for 100 cubic feet. **1 CCF = 748 gallons.**

How your water budget is calculated

Your monthly household water usage budget is the sum of your indoor + outdoor budgets. Together they represent an efficient volume of water to meet your individualized water needs. Visit IRWD.com/understandmybill for more information.

- Your indoor budget is simple: 50 gallons per person per day (divided by 748, to convert gallons to CCF).
- Your outdoor budget is calculated for your property using actual data from local weather stations. We calculate your irrigated landscape area (in acres) x evapotranspiration (actual daily plant water loss in cubic inches) x 0.75 ET factor (to account for the fact that at least 40% of your landscape should be drought-tolerant) x 36.3 conversion factor (to convert acre-inches into CCF).





Q: Juan! This weather has wreaked havoc on my plants. Any tips on what to do?


A: Coming out of a cold and rainy winter, you've got a little work to do to get ready for the warmer months ahead. First, prune or remove any dead or damaged plants that might attract pests, and consider replacing them with California natives. Next, check your sprinklers for leaks or damaged components and fix them right away to prevent water waste.


Last, rid your planters of weeds, lay down some nutrient-rich compost and add a thick layer of mulch a few inches deep to bring the soil to life, help it retain moisture, and encourage root growth.

Got landscape questions? Email AskJuan@IRWD.com or ask on Facebook, Twitter or Instagram with [#irwdcommunity](https://www.instagram.com/irwdcommunity). See past answers at RightScope.com/landscape-resources/ask-juan.

 **Like Us**
Irvine Ranch Water District

 **Follow Us**
@IRWDnews

 **Watch Us**
youtube.com/IrvineRanchWD

 **Follow Us**
@IRWDnews